

eBOOK

# Packaging

TECHNOLOGY TODAY



**> CONNECTS <**

**November 9-13, 2020**

SPONSORED BY

**METTLER TOLEDO**



**YASKAWA**



# Partner With the Product Inspection Experts

For ultimate brand protection, regulatory compliance, and an improved bottom line.

## Metal Detection



## X-ray Inspection

## Checkweighing



## Vision Inspection

## Track & Trace



Visit us at Pack Expo Connects to Live Demonstrations and Chat with Experts!

► <https://pe.show/148>

# METTLER TOLEDO

# YASKAWA

[www.motoman.com](http://www.motoman.com)

Yaskawa America, Inc., Motoman Robotics Division is a leading robotics company in the Americas. From high-speed picking to robust case packing, our end-to-end automation solutions deliver the speed, precision and reliability to handle food and beverage, pharmaceuticals, consumer products or specialty items. A full suite of robots and technologies are available to meet industry-specific requirements and production goals, including the 20 kg payload HC20XP – the industry’s first IP67-rated collaborative robot that is equipped for use in damp or splash-prone environments.

Featuring cast aluminum construction for industrial durability, this versatile robot includes NSF H1 food-grade grease in all axes. An easy-to-clean surface and a 1,700 mm work envelop that allows the robot to reach full 80-inch pallets without requiring an elevator make it an ideal choice for a broad range of packaging and palletizing applications in sanitary environments.

Meeting established safety standards, the HC20XP features Power and Force Limiting (PFL) technology to protect workers from potentially harmful contact situations. Easy-to-use hand-guided teaching is also supported, facilitating easy programming for fast implementation of a robot system.

The use of collaborative robots, and robotic automation in general, has bolstered the production of general use products in recent months, [helping manufacturers withstand market pressures and achieve tangible outcomes.](#)



With over 450,000 Motoman® robots installed globally, Yaskawa is committed to complete customer satisfaction, nurturing long-term customer relationships that help maximize uptime, accelerate ROI and ensure long-term performance.

Visit the [Yaskawa booth](#) at Pack Expo Connects to learn more and to attend our HC20XP product demonstrations (Monday, 11/9 at 10:15 CT and Thursday, 11/12 at 10:15 CT).

# Machines Engineered for Your Toughest Challenge

## About Delta ModTech

For over 40 years Delta ModTech has been a leader in web converting and packaging innovation. Based in Minneapolis, Minnesota, Delta ModTech designs and builds manufacturing systems for the most complex demanding jobs in the medical, pharmaceutical, label, RFID and cosmetic industries. These systems are installed worldwide and may feature a variety of processes including heat-seal pouching, rotary and semi-rotary die cuts, tight tolerance registration, printing, laminating and laser die-cutting.

## Visit us at Pack Expo Connects – Live Demonstrations

A Delta ModTech converter will be running a complex medical product in-line with our packager. The system will feature a variety of processes including rotary die cutting, precise part placement, vision inspection and heat seal pouching.

*Delta ModTech is dedicated to providing precise, flexible and innovative manufacturing solutions worldwide.*



## MARKETS SERVED

**Labels:** Digital Finishing, RFID, Multi-laminates, Holograms

**Medical:** Woundcare, Ostomy, Point of Care

**Pharmaceutical:** Transdermals, Dissolvable Films, IVD

**Automotive:** Gaskets, Adhesive pads, Metalized labels

**Electronics:** Flex circuits, touchscreens, Laser Ablation

**Consumer:** Cosmetics, Orthopedics, Filtration



800-279-3358 | 8445 Bunker Lake Blvd. NW | Ramsey, MN 55303 | [www.deltamodtech.com](http://www.deltamodtech.com)



Engineering  
labeling solutions.  
[universal1.com](http://universal1.com)

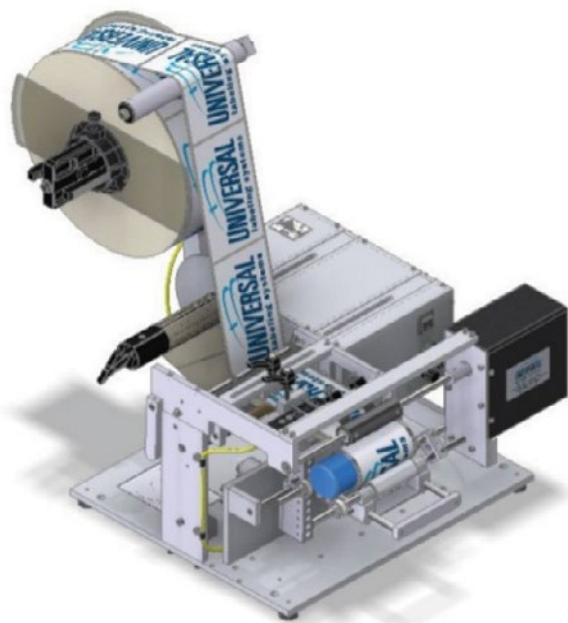
Universal Labeling Systems is the premier designer and builder of pressure sensitive labeling equipment. Since 1984, we have manufactured the most comprehensive line of labeling machines from table top models to high speed redundant labeling systems. Out of our St. Petersburg, Florida Facility, we design more custom labeling systems than anyone.

At Pack Expo we will present four (4) methods of labeling to show that we have a solution for virtually any size of organization, from a start-up company to a fortune 500 corporation.

Our markets include:

- Food & Beverage.
- Medical
- Health & Beauty
- Pharmaceutical
- Cannabis
- Durable Goods
- Warehouse Environments
- Covid-19 Related Products

Our labeling machines and systems, made in the USA, are sold and supported by a worldwide network of authorized distributors.



Universal Labeling Systems is North America's largest manufacturer of made-to-order, pressure sensitive labeling equipment. Universal Labeling equipment is sold and supported through a worldwide network of authorized distributors. To learn more, please visit [www.universal1.com](http://www.universal1.com).

**See us virtually at Pack Expo**



# New! Kuri Tec® Clearbraid® Oil & Polyspring® Oil Food Oil & Fats Hoses

The Polyspring® Oil K7560 Series and Clearbraid® Oil K3550 Series, Food Oil and Fats Hoses, are the first hoses specifically designed for the transfer of oily food products such as soybean, olive, sunflower and other food oils. Other PVC hoses can become stiff and susceptible to cracking after prolonged exposure to food oils, however the Polyspring Oil and Clearbraid Oil are specially formulated to resist these damaging effects.

**High Oil Resistance** – Meets ARPM Class A rating for high oil resistance. Remains flexible when exposed to oils. Won't dry out or crack like other PVC hoses.

**Braided Fabric Reinforcement (Clearbraid Oil K3550 Series)** – High tensile strength, food grade, polyester yarn braid provides higher working pressures.

**Steel Wire Reinforcement (Polyspring Oil K7560 Series)** – Electro galvanized steel wire reinforcement prevents kinking and collapsing.

**Static Dissipative, Polyspring Oil K7560 Series** – Steel wire can be grounded to help prevent the build-up of static electricity for added safety

**Good Chemical Resistance** - Good resistance to alcohols and dilute acids. Not suggested for use with hydrocarbons.

**Kuri Tec®**

**CLEARBRAID® OIL POLYSPRING® OIL**

**Food Oil & Fats Hoses**

Introducing the first PVC hoses designed specifically for the food oil industry.

K3550 Series

K7560 Series

**3X BETTER OIL RESISTANCE\***

\*Than standard PVC hoses. Meets ARPM Class A (High Oil Resistance)

The Polyspring® Oil and Clearbraid® Oil, Food Oil and Fats Hoses, are the first hoses specifically designed for the transfer of oily food products such as soybean, olive, sunflower and other food oils. Other PVC hoses can become stiff and susceptible to cracking after prolonged exposure to food oils, however the Polyspring Oil and Clearbraid Oil are specially formulated to resist these damaging effects.

**Kuriyama of America, Inc.**

ISO 9001 QUALITY MS

MADE IN MEXICO

MADE IN CANADA

**Transparent** – Allows for visual confirmation of material flow.

**Glass-smooth Interior** – Ensures smooth flow of material and reduces material buildup.

**Non-marking Cover** – Can be dragged over flooring without leaving marks typical of rubber hoses.



COMPANY SHOWCASES

## Schubert Emphasizes Technological Developments

Schubert is placing great emphasis on the new virtual trade show format “PACK EXPO Connects” to present its latest technological developments and product innovations. By showcasing six different live demos, Schubert will address current challenges and requirements FCMG manufacturers are facing worldwide. Show attendees will be offered virtual tours through Schubert’s headquarters in Germany and through its North American headquarters and training center in Charlotte, North Carolina. A highlight will be the introduction of a compact Casepacker for a US American manufacturer, which was originally planned to be exhibited live at PACK EXPO Chicago.

### Six different live demos will present a range of new features

The family-owned German leader in TLM packaging machines, has once again prepared a show program to address current requirements such as a high level of flexibility, availability, and fast time to market. Schubert will demonstrate its fully integrated Flowpacker and additionally manufacturers will learn how to print their own 3D printed format parts on site, in

next to no time. Producers of pharmaceuticals will receive details on secondary vaccine packaging provided by our experts from the pharmaceutical business unit, Todd Shewmaker, Sr. Sales Manager and Carsten Peters, Senior Key Account Manager.

### Live at the PACK EXPO: A preconfigured Case Packer – Immediately ready for use

All of Schubert’s demos will be presented personally by its employees – the specialists Schubert’s customers can always rely on. One significant highlight of this year’s show will be Schubert’s lightline Cartonpacker, a case packing machine with a very small footprint. For the first time, Schubert will present its case packer live during a North American trade show. The case packer on exhibit is designed for a Schubert customer located in the US. The responsible Sales Account Manager, Stefan Hoffmann, will demonstrate all features of the compact and space saving system and moreover will take the viewers on a virtual journey through the company’s German headquarters. “This new show format is a great opportuni-



Show attendees at this year’s PACK EXPO Connects will be offered virtual tours through Schubert’s facilities. Schubert employees will demonstrate customer machines and all their distinct features.

ty to invite our customers on a virtual journey through our production site in Germany – it’s not only about presenting final assembled machine systems but also about providing the bigger picture, where is the machine built, by whom and how will it be shipped to the US after the successful FAT? This and even more will be covered during the live demo: A preconfigured Case Packer – Immediately ready for use”. ■

## Festo Showcases its Latest Automation Innovations

Festo has packaged a mix of innovative products with live product demonstrations for Pack Expo Connects. Live demonstrations include:

- Automation solutions for the COVID-19 pandemic – new products for life science companies developing respiratory care products, packaging, high volume sample analysis equipment, and vaccines production systems
- Low cost and easy to use electric alternatives to pneumatic actuators with built in I/O link functionality for IIoT communications – the Simplified Motion Series
- The CPX-AP-I next generation of

distributed I/O for pneumatics and electric automation on a single modular platform for advantages such as predictive maintenance and quick commissioning

- The benefits from FSMA and other food safety regulations in terms of energy savings and improved machine availability

Additional live demonstrations from Festo showcase process automation for the food industry, the latest adaptive grippers for end-of arm-tooling, and harnessing the power of product traceability in smart manufacturing. Each presentation will be 15 minutes in length with two per

day. The schedule of live demonstrations can be found on the [Festo Pack Expo Connects show page](#).

The Festo virtual booth will feature 10 automation products, including the Motion Terminal for digitalization of pneumatics, the smart Multi-Carrier conveyor for increased flexibility, and the CPX-E modular controller/VTUG valve terminal combination for increasing the density of I/O in a control cabinet and for minimizing tubing to make installation faster and less complex. Visitors to the virtual booth will be able to chat with Festo product and application personnel, access product videos, and download literature. ■

COMPANY SHOWCASES

## ORBIS to Showcase Sustainable Reusable Packaging Solutions

Through a virtual showroom, live demos and expert-led webinars, ORBIS will showcase reusable packaging solutions that support food, beverage, industrial and retail supply chains. Additionally, ORBIS reported that its Pack Expo presence will highlight the importance of increasing supply chain sustainability.

"A more sustainable business starts with the supply chain and how product and parts are stored, handled, transported and delivered," said Bob Petersen, vice president of marketing and product management at ORBIS Corporation. "The take-make-waste philosophy no longer meets the needs of society. The circular economy concept — based on a continuous flow of product in the value circle — is the future of a successful, sustainable supply chain. At ORBIS, we focus on designing out waste (reduce), keeping products in use (reuse) and repurposing packaging at end-of-life (recycle)."

ORBIS' showroom and live demos will showcase a variety of reusable packaging solutions, services and programs, including:

### NEW 40x48 Odyssey® pallet

The 40 x 48 Odyssey® pallet provides stability with unique design features, including optional steel reinforcements and molded-in frictional elements. These elements minimize load shifting, do not damage cases or product, and prevent pallet slippage off fork equipment. While designed to support loads of 2,800+ pounds, the Odyssey pallet is built to be easily moved manually, while improving product and associate safety through frictional elements.

### XpressBulk® for bulk merchandising

The XpressBulk® is a retail-ready delivery system that transports high-velocity goods, like milk, from the delivery truck to the retail cooler with only one touchpoint. It's comprised of a dolly, removable handle

and four plastic contoured trays. The trays collapse into one another for a snug fit, and the dollies can be stored on top of each other for space optimization — a 5:1 storage ratio over Bossy carts.

### Small-format pallet with totes

Small-scale brick-and-mortar stores need smaller-format pallets that can easily fit through tight spaces, such as doorways and aisles. ORBIS' small-format pallets are designed for these delivery and movement needs, enabling vertically efficient unit loads, optimizing delivery truck space and speeding up merchandising. These pallets are compatible with a variety of ORBIS plastic totes.

### PlastiCorr® reusable plastic corrugated box

PlastiCorr® is a direct replacement for corrugated fiber boxes with identical functionality and enhanced features. This sustainable solution works seamlessly with existing automated packaging lines and is ideal for food, beverage and CPG goods applications. Its patented



design allows the box's flaps to fold and straighten like new every time, allowing PlastiCorr to be reused multiple times with no change to pack count or pallet configurations.

### OpteBulk™

The OpteBulk™ is comprised of a pallet, sleeve and top cap to keep product loads safe and secure. It is an economical collapsible bulk container for lighter-weight loads. The sleeves can be fabricated from plastic corrugated materials with custom features designed to meet a variety of applications. This product design allows for maximum cube utilization.

### 48x45HDMP BulkPak®

The 4845 HDMP container is designed and constructed to efficiently move, store and ship products. With weight capacities from 1,500-2,000 lbs, it's ideal for all types of product loads. This container is available in multiple heights and is offered in a variety of medium-duty and heavy-duty styles to meet many application needs. Its collapsibility offers a favorable return ratio which equals fewer trips. Additional products for the industrial supply chain will also be on hand, including the AdjustaPak™ sliding dunnage system, ORBIShield® dunnage, ORBIS Metal Racks and StakPak® totes for part shipments.

ORBIS experts are presenting at the webinars, sponsored by the Reusable Packaging Association:





## COMPANY SHOWCASES

- *Optimizing Store and Warehouse Operations for eCommerce*; November 9; 11:30 a.m. Speaker: Andrea Nottestad, Senior Product Manager
- *Best Practices for Reusable Plastic Pallet Selection*; November 10; 11:30 a.m. Speaker: Alison Zitzke, Senior Product Manager
- *Reusable Packaging for Automation*; November 11; 11:30 a.m. Speaker: Chris Shepard, Business Development Manager

Similarly, ORBIS will be conducting eight live 15-minute product demos. These demos will also be available for download following the live session.

- *Effective Pallet Management Improves Control and Reduces Waste*; November 9; 2:30 p.m. Speaker: Phil Biga, Senior Market Manager – Reusable Packaging Management
- *Streamline Retail Deliveries with the Small Format and Mobile Merchandising Solutions from ORBIS*; November



10; 2:30 p.m. Speaker: Mike Ludka, Senior Product Manager

- *Selecting the Right Industrial Bulk Container*; November 10; 2:45 p.m. Speaker: Ryan Klement, Senior Product Manager
- *Customer Reusable Packaging Considerations*; November 11; 2:30 p.m. Speaker: Kacie Freeberg, Market Manager – Custom
- *Plastic Pallets for Your Supply Chain*; November 11; 2:45 p.m. Speaker: Alison Zitzke, Senior Product Manager
- *Reusable Packaging for e-comm DCs*; November 12; 2:30 p.m. Speaker: An-

drea Nottestad, Senior Product Manager

- *Selecting the Right Sleeve Pack Solutions for Your Supply Chain*; November 12; 2:45 p.m. Speaker: Micah Naasz, Product Manager
- *Reusable Airtight, Watertight Bulk Containers for Shipping Powders and Liquids*; November 13; 10:30 a.m. Speaker: Bob Klimko, Director of Market Development

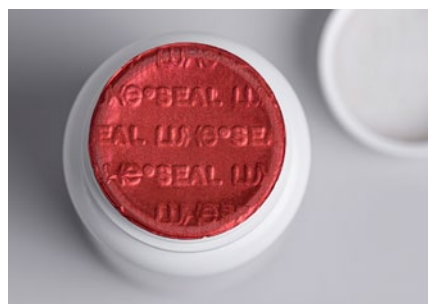
For more information, visit [orbiscorporation.com](http://orbiscorporation.com). ■

## Tekni-Plex To Presenting Live Closure Liners Demos, Related Equipment

Tri-Seal, a Tekni-Plex business, will be presenting four live demos about closure liners and related equipment during this year's virtual Pack Expo, November 9 -13. (All times listed below are U.S. Central Time.)

Tri-Seal will be launching its Luxe® seal two-piece embossed induction seal liners which provide enhanced brand support, and its new line of reduced plastic content closure liners which assist brand owners in meeting their environmental goals. Tri-Seal's MMC Packaging Equipment business will be sharing the latest optimization trends in closure lining automation as well as sealing technologies with examples from its most recent projects.

**12:00 pm, Monday, November 9:** *New optimization trends in closure lining automation.* MMC Packaging Equipment will be presenting liner yield optimization



to reduce annual costs. It will also be sharing the latest trends in lining automation including the benefits of PC-based controls, as well as vision inspection.

**2:15 pm, Tuesday, November 10:** *Reduce, Reuse, Recycle: latest developments in sustainable liners.* This presentation will focus on Tri-Seal's new Protecseals® line of "reduced plastic content" closure liners engineered to assist brand owners in meeting their environmental

goals. The line includes a polypropylene (PP) liner that pairs seamlessly with PP closures to eliminate the need for removal prior to recycling.

**12:45 pm, Wednesday, November 11:** *Luxe® seal: the future of two-piece induction seals.* The presentation focuses on the distinguishing features (brand support and messaging) of the embossed liner, and why it is a good alternative to printed options. A demonstration will show cap manufacturers how easy it is to switch rolls.

**1:45 pm, Wednesday, November 11:** *Sealing solutions for beverage closures and capsules.* An overview of direct application sealing technologies with a focus on the critical parameters for the handling/feeding of the parts and foil.

For more information, visit [www.tri-seal.com](http://www.tri-seal.com). ■

COMPANY SHOWCASES

## NORD Brings Innovation to Pack Expo 2020

NORD DRIVESYSTEMS announced it is introducing more innovative products at this year's Pack Expo Connects virtual event. These products reportedly mark the beginning of a new era of energy efficiency and cost savings for the packaging industry, along with the modular configuration flexibility and reliability that NORD is known for. Each product demonstration will be followed by a live technical Q&A session with engineers and other technical experts in their respective disciplines.

### NEW! Condition Monitoring for Predictive Maintenance

Monday, November 9

12:15 p.m. – 12:30 p.m. Central Time

Presenter: John Mason, Business Development Manager

For condition monitoring, drive and status data are recorded periodically or continuously to optimize the operational safety and efficiency of machines and plants. Condition monitoring provides valuable information for predictive maintenance with the goal to service equipment proactively, avoiding costly downtime, reducing service and material costs, increasing overall system availability, and more.

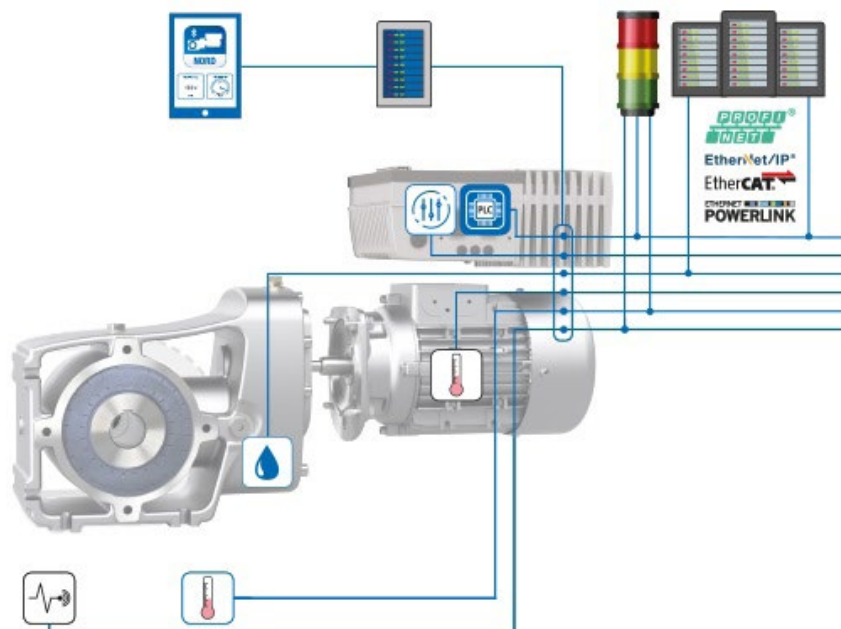
### NEW! LogiDrive Complete Drive Solution with IE5+ Motor Technology

Tuesday, November 10

2:45 p.m. – 3:00 p.m. Central Time

Presenter: James Chandler, Key Markets Manager

The NORD LogiDrive™ solution is a complete decentralized drive package that greatly reduces engineering and commissioning efforts and maintains efficiency even at partial load and low speeds. With this modular system, the number of variants can be minimized, making it easier to maintain and saving Total Cost of Ownership (TCO) costs for the operator. Now, LogiDrive systems are available with NORD's new IE5+ Ultra-Premium High Effi-



Condition Monitoring from NORD tracks temperature, vibrations, system faults, and more.

ciency motors for even greater operational efficiency and cost savings.

### nsd tupHTM Sealed Surface Conversion System

Wednesday, November 11

2:30 p.m. – 2:45 p.m. Central Time

Presenter: Jim Alt, Senior Project Engineer

NORD's nsd tupH sealed surface conversion system is not paint; it's a chromate-free chemical process that changes the physical properties of the aluminum housing, creating a surface that is 6–7 times harder than the original aluminum. After the process is complete, the housing receives an additional sealant that is resistant to contact corrosion from acids and alkalis (entire pH range), will not flake, and will not propagate damage when impacted or scratched. This conversion system gives you performance comparable to stainless steel, without the added weight and cost.

### NORD CON APP with ACCESS BT

Thursday, November 12

2:00 p.m. – 2:15 p.m. Central Time

Presenter: Dan Breitbarth, Controls Engineering Manager

The NORDAC NORD CON APP with NORDAC ACCESS BT Bluetooth stick is the mobile commissioning and service solution for all NORD drives. It has stand-alone parameter memory function, a Help function, rapid access to parameters, and backup and recovery function for simple handling of parameters. The ACCESS BT Bluetooth stick can be plugged in or disconnected while the gear unit is in operation and allows for easy transfer of parameters to your PC via USB. The NORD CON APP has an individually configurable oscilloscope function for drive analysis and an easy-to-use dashboard for drive monitoring and fault diagnosis.

For more information, visit [NORD's online showroom](#). ■

COMPANY SHOWCASES

## The Massman Companies to Demonstrate Case Packing, Pouch Packaging, Liquid Filling and Bundling Systems

The Massman Companies, a group of packaging equipment manufacturing companies, plan to exhibit and demonstrate the capabilities of a number of its machines and systems at Pack Expo Connects 2020, the virtual trade show.

The virtual site includes information about the various machines and systems, as well as the times of scheduled live demonstrations of many of the systems being exhibited in the virtual exhibit. The site also includes opportunities to chat live with various members of the Massman Automation sales team about the capabilities of the various systems on exhibit, or to discuss the attendee's specific packaging needs.

The machines in the virtual exhibit include:

- The GP-M3000 pouch filling machine, which operates through ten successive steps that open, fill, settle product and seal flexible pouches. The machine handles stand up pouches, pouches with side gussets, flat-bottom or 3-side seal configurations.
- The HMT Mini top only case sealer, a compact, low total cost of operation system designed for smaller packaging operations or for smaller runs



within larger operations. Designed in a modular format, the sealer can grow to meet new case demands by replacing modules rather than by buying an entirely new machine.

- The ME-10G system, a compact machine for erecting and sealing a wide range of case sizes while occupying a limited production space. The machine can also be portable, allowing it to serve multiple lines within a facility, and is quickly adjustable for change-over to accommodate new case sizes.
- The HFS-IMI-1100 system, an inline fill and seal machine for pre-made pouches, is designed for the filling of a wide variety of dry products, from trail mixes and pet treats to plant foods and cheese.

A Massman Companies multi-machine end-of-line system will also be demonstrated. It incorporates a Massman Automation custom tray loader that is connected by means of a Dorner lift gate conveyor to an EDL tray wrapper and an EDL conveyor that then delivers wrapped trays to a Massman Automation bottom load case packer. This is an example of Massman Companies' ability to integrate machines produced by its various member companies to create a single custom system to meet a specific customer's need.

**Viewers can access the virtual Massman exhibits by visiting [www.pe.show/197](http://www.pe.show/197). ■**

## Double Bagging Line Production Without Increasing Floorspace from Triangle

With a machine width of only 36 in., Triangle's Model CSB, Compact Sanitary Bagger, runs bags from 2.5" - 13" wide and up to 15" long. Run individually or pair two baggers side by side with a single scale to maximize production in a 72" footprint. Its unique design means that two compact baggers can be installed in the same space required by one typical vffs machine.

In addition to saved floor space and increased production, key benefits include:

- Improved OEE.
- State of the art sanitation - designed

to clean in place.

- Solid stainless-steel frame, electropolished and fully welded.
- Quick and easy changeovers - because Model CSB can run independently or in tandem, users can change over one machine while the other is still running.
- Labor savings - when paired in a dual configuration, one operator can easily run both machines.
- Rockwell Automation PLC and servo drives. ■



COMPANY SHOWCASES

## Regal Introduces Modsort Trident Three-Way Sortation System

Regal Beloit Corporation announced the introduction of its Modsort® Trident three-way sortation system. The company plans to showcase this newest edition of its modular transfer and divert station at the Pack Expo Connects virtual conference beginning on Monday, November 9.

Part of the Modsort suite of products, the Modsort Trident has a four-zone infeed that gaps a product, reads the package, and sends it down a belt, where it then diverts left, right or straight on a 30-degree spur-curve to one of three sorting locations.

The Modsort Trident is a Regal concept and a continuation of its Modsort technologies, which is known for its quiet operation. Modsort technologies include the Modsort Station (individual transfer), Modsort Derivatives (with expanded sort capacity) and Flat Sorter Systems (with a complete mobile and expandable solution). The Modsort Trident three-way



sortation system includes additional mechanical variations to this turnkey solution.

“The Modsort Trident is ideal as a secondary sortation station in a fulfillment center and works well with parcel post, eCommerce and warehouse distribution applications,” said Jeremy Fryman, System-Plast product manager, Regal. “This sortation system can accommodate up to 50 cartons per minute on average, with a weight limit of 50 lbs. It utilizes a 34 in. wide (between frame) x 66 in. long triple-belt divert for poly-

bags, boxes, flats and some types of totes. Modsort Trident technology uses 24-volt DC power and requires only a simple power drop and Ethernet connection to customer warehouse management solution. Designed to be mobile (the unit comes on heavy duty casters) and can be redeployed if needed to another location.”

The Modsort Trident features:

- Frame mounted HMI operator control panel with pushbuttons for start/stop, reset, communications fault, and emergency stop
- Allen-Bradley-based PLC controller/power panel
- Compact Logix 5380 processor
- Allen-Bradley 24-volt DC power supplies
- Allen-Bradley Stratix network switch
- Optional NAT
- Digital/Analog input/output back-plane array
- I/O sub panels for MDR motor controller cards ■

## Syntegon Launches Kliklok ACE Carton Former to North America

Syntegon Technology plans to celebrate the North American launch of its new Kliklok ACE (Advanced Carton Erector) toplevel carton former at Pack Expo Connects 2020. Visitors can view the online reveal of the new machine from the site in Decatur, GA.

Based on customer requirements, the Kliklok ACE was developed with a particular focus on ergonomic design, sustainability, and increased efficiency. The newly integrated Flex Feeder ensures reliable and safe carton control through the entire process.

“The new carton former platform combines high-speed forming capabilities with a generous carton size range, giving manufacturers a lot of flexibility,” said Janet Darnley, product manager at Syntegon Technology in Decatur, USA. The Kliklok ACE range runs at up to 80 cycles

per minute with single, double, or triple heads and is suited for a number of food applications, such as bakery, snacks, cereal bars, frozen/prepared food, tea and coffee, as well as non-food products.

### Flexibility in forming systems

The new Kliklok ACE carton former can form lock-style and glue-style cartons on the same machine, offering manufacturers full flexibility. Syntegon also provides the machine with ultrasonic technology, an industry first in this segment.

Both, the lock and ultrasonic versions, are glue-free, making them a real sustainable option. The Kliklok ACE range can handle different carton format sizes, ranging from a blank size of 190 millimeter length x 122 millimeter width to 800 millimeter length x 600 millimeter width.

As a contribution to their customers’



The new Kliklok ACE carton former platform was developed with a particular focus on ergonomic design, sustainability, and increased efficiency.



## COMPANY SHOWCASES

economic success, the packaging experts at Syntegon developed the machine with a new Flex Feeder. The solution offers positive carton control, transferring the cartons reliably from the forming process to the machine exit. "This reduces the risk of jams within the machine, causing stops and downtime," Darnley explains. The Kliklok ACE is also capable of running paperboard or corrugated material.

### Operator-friendly design

Syntegon also put an emphasis on an ergonomic machine design. The carton hopper, which operators load manually,

was designed at waist height. This makes the feeding process more operator friendly. Overall, the machine allows tool- less changeovers, which supports vertical start-up. The machine is built in an open frame stainless-steel design, which is IP54 rated.

To offer customers a future-proof solution, the Kliklok ACE is not only available with a single head system, but also a double or triple head system, which offers more flexibility in terms of speed and size change between these different configurations. "At PACK EXPO Connects, we will showcase the machine with a double head system for typical carton

sizes, which runs at 60 cycles per minute with an output of 120 cartons per minute, using a lock closure," Darnley says.

### No control cabinet necessary

Compared to the previous machine series, the Kliklok ACE has a smaller footprint overall. The new on-board electrics eliminate the need for a control cabinet. "This solution not only saves a lot of space but is also easy to access for trouble-shooting. In addition, since no cabinet is needed, the process no longer requires air conditioning, which is more efficient and sustainable," Darnley explains. ■

## Texwrap to Demonstrate its Shrink Wrapping, Bundling and eCommerce Packaging Solutions

Texwrap, a ProMach brand, is showcasing the capabilities of its shrink wrapping, shrink bundling and eCommerce systems during a week of virtual demonstrations at Pack Expo Connects 2020.

### Reducing Costs with Shrink Wrappers

Texwrap shrink wrappers can reduce overall operations costs. The integration of our vertical shrink wrapper with a filler allows users to collate and shrink wrap retail-ready multi-packs immediately after filling. Additionally, the company's eCommerce Auto Mailer solution that provides increased throughput, decreased DIM weight for shipping and up to 50 percent material cost reduction.

Virtual demonstrations on reducing costs with shrink wrappers include:

- "See How Texwrap's Vertical Shrink Wrap Systems Integrate Seamlessly In-Line with the Filler, and Provide Speed, Versatility, Reduced Labor and Retail-Ready Presentation" - November 9, and 2 p.m. CDT, Thursday, November 12.
- "Learn How the Right eCommerce Solution Can Reduce Labor, Decrease Material Costs, Increase Throughput

and Reduce Errors" - 12:15 p.m. CDT, Monday, November 9, and 10:30 a.m. CDT, Friday, November 13.

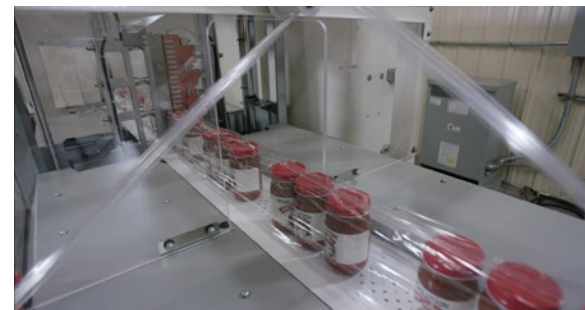
### Optimizing Operations with High-Speed Shrink Bundlers

High-speed shrink bundling systems bring value to customers through integration with tray packers, collations systems, labeling, palletizing and other equipment. The benefits of this integration are numerous, including product uniformity, reduced label and material costs, as well as saving space. Texwrap offers many high-speed shrink bundling systems that can be deployed to optimized your operations.

- "Learn How Custom High-Speed Shrink Bundling Solutions Can Reduce Labor and Material Costs and Increase Throughput in Your Operation" - 12:15 p.m. CDT, Tuesday, November 10, and 2 p.m. CDT Wednesday, November 11.

### Rapid ROI with Horizontal Wrappers

Texwrap's high-speed horizontal wrappers bring a fast return-on-investment to applications including fresh and frozen pizza,



cakes, pies and several other delicate food and bakery products. These wrappers come with innovative technology, such as a patented 5-axis servo orbital seal system, TVS2 side seal and other advances to provide the most efficient and reliable packaging solution at the lowest total cost of ownership.

- "From Pizza Production to Paper Products, Learn About Features That Can Help You Realize the Lowest Total Cost of Ownership in High-Speed Horizontal Shrink Wrapping" - 11 a.m. CDT, Wednesday, November 11, and 11:45 a.m. CDT, Thursday, November 12.

**For more information, visit Texwrap's virtual showroom <https://pe.show/410>. ■**



COMPANY SHOWCASES

## Quest Industrial's Robotic and Vision-Guidance Packaging Systems Highlight Week of Virtual Demonstrations

Robotics are fast becoming the norm in packaging applications, and no one knows more about robotic integration than Quest Industrial. During Pack Expo Connects 2020, Quest Industrial will be hosting nine virtual demonstrations focusing on robotics and vision-guidance systems for the food, beverage, dairy and packaging industries.

### Quest Quik Pick Robotic Case Packer

Two of the demonstrations center on the Quest Quik Pick, a high-speed robotic case packer that's quick, accurate and compact. A main differentiating point with the Quik Pick is its speed and flexibility. With the QPick custom case packing software, the Quik Pick can be configured to pick up as many as 1,000 pieces per minute.

The Quik Pick works well with flexible film packaging, thanks to its vision system and optional 3D scanning that quickly detects the pouches' topography to identify the proper point for picking. While the ideal application is flexible film packaging, the Quik Pick performs well with just about any packaging type that comes from a vertical form fill seal or horizontal flow wrapper machine. The virtual demonstration on the Quik Pick high-speed robotic case packer titled, "Robotic Top Load Case Packaging Simplified," is scheduled for 10 a.m. CDT, Monday, November 9, and 1:45 p.m. CDT, Wednesday, November 11.

### Quest Boxed-Bot Robotic Palletizing

Another demonstration stars the Quest Boxed-Box space-saving robotic palletizer. Featuring a small footprint starting at just 8'x10', the Boxed-Bot allows an operator to design and produce exact pallet patterns quickly and easily from bags to boxes and other product types. Creating patterns is accomplished through the QBox custom



pallet building HMI-based software, the most technologically-intuitive operator interface available on the market. The ability to build your own patterns saves time and money by eliminating the need to have a service programmer onsite to perform the task. The Boxed-Bot features a Fanuc robot that provides higher stack patterns, which better maximize tractor-trailer loading for more efficient shipping. The virtual demonstration on the Boxed-Bot robotic palletizer and QBox pallet building software titled, "Palletizing Simplified: Modular Engineering & Flexible Design," is scheduled for 10 a.m. CDT, Tuesday, November 10, and 1:45 p.m. CDT, Thursday, November 12.

### Quik Fill QF 100 Robotic Primary Packaging

For packaging produce, the Quest Quik Fill QF 100 Series robotic primary packaging are a family of solutions designed to automate the filling of single and multi-compartment trays, bowls and clam shell containers. Borrowing on its

vision-guidance expertise, Quest uses a combination of 2D/3D vision, specialty scales, and food-safe robotics to tailor an automated solution to each application. The virtual demonstration on the Quik Fill QF 100's capabilities in produce packaging applications titled, "Eliminate the Guesswork & Automate Produce Packaging Filling," is scheduled for 1:45 p.m. CDT Monday, November 9; 10 a.m. CDT, Wednesday, November 11; and 10 a.m. CDT, Friday November 13.

**You can visit Quest Industrial's virtual showroom at: <https://pe.show/310>. ■**

COMPANY SHOWCASES

## New Edge Roller Technology Conveyor Highlights Dorner's Pack Expo Connects 2020 Virtual Showroom

Dorner's new Edge Roller Technology conveyor highlights an exciting week of virtual activity at Pack Expo Connects. The ERT250 is a pallet handling conveyor capable of zoning for accumulation and automation assembly applications. As implied by its name, the ERT250 uses rollers to move pallet conveyors smoothly with no friction (a byproduct often seen in belt-driven platforms). The rollers are driven by a patent-pending, energy efficient linear gearbox that gives customers added flexibility with motor positioning and zoning. This allows for zone and slip roller operation. Simply removing a lower gear creates independent zones. The non-contact zone control provides simplified traffic control that eliminates pallet stops and costly pneumatic valves. Conversely, slip rollers can be used for full length runs with conventional pneumatic pallet stops. The rollers are easily accessible and can quickly be replaced without affecting the remaining portion of the conveyor.

The ERT250 is ideal for applications calling for pallet or tray handling; no- and low-back pressure accumulation; medium to heavy load assembly automation; and Cleanroom applications such as medical product or device manufacturing, assembly, packaging and others.

Online visitors can also learn how the FlexMove Wedge and Helix conveyors can move product on tight turns around existing equipment. FlexMove flexible chain conveyors are designed for effective horizontal and vertical product movement on a continuous run driven by a single gearmotor when floor space is limited.

The Wedge design conveys a product by gripping both of its sides to move it in a smooth, efficient manner; while Helix conveyors feature continuous 360° turns for moving product up or down in a vertical space.

FlexMove conveyors are available in three purchasing options based on the customer's application and situation. With FlexMove Components, customers can



order all the necessary parts and components to build their FlexMove conveyor onsite. FlexMove Solutions builds the conveyor at Dorner, is tested then disassembled into sections and shipped to the customer for installation. Finally, the FlexMove Assembled Onsite option features the Dorner installation team assembling the conveyor onsite at the customer's location.

**View more at Dorner's virtual showroom <https://pe.show/176> . ■**

## Matrix to Give Virtual Demonstration on How it Fills Gel and Freezer Packs, and Other Flexible Packaging Fast and Efficiently

As food delivery services continue to be a popular option for consumers, gel and freezer packs are in high demand by fulfilling a critical role in keeping products fresh. Manufacturing these gel and freezer packs is a task perfectly suited for the Matrix Mercury vertical form fill seal machine, which will be demonstrating its capabilities online during Pack Expo. Matrix will be hosting a total of eight virtual demonstrations on its lineup of vertical form fill seal baggers, pre-made pouch and stickpack machinery during the virtual show. The full demonstration lineup can be viewed on its virtual showroom.

### Mercury

The Matrix Mercury is a high-speed vertical form fill seal bagger that's capable of filling up to 140 flexible packaging bags per minute. The Mercury is known for its easy operation and quick changeover and setup. It can accommodate bag widths between 2" and 11", and bag lengths between 3" and 15". The Mercury is a great cost-effective packaging solution as it features a small footprint, stainless-steel frame, automatic film tracking, a registered film sensor and more.

Ideal applications include:

- Gel and freezer packs

- Individually quick frozen foods (IQF)
- Beverage
- Bakery
- Candy
- Tea
- Disinfectants
- Dried meats
- Pet foods
- Pharmaceuticals
- Snack foods

The virtual demonstration on the Matrix titled, "Matrix Mercury, Performance in an Easy-To-Use Vertical Bagger," is scheduled for 11 a.m. Tuesday, November 10.

## COMPANY SHOWCASES

### Elete Premier

For customers who require more hygienic attributes in their filling machine, the Matrix Elete Premier is the answer. The Elete Premier, a vertical form fill seal bagger that is a high-performance, totally configurable packaging solution features a stainless steel, sanitary design. All major components, including fasteners, bearings, shafts and motors are suitable for washdown environments. A flexible machine, the Elete Premier can produce several different bag sizes, such as pillow, gusset, quad and flat bottom with a variety of films, including 100 percent recyclable, at filling rates up to 120 bags per minute.

Ideal applications include:

- Food
- Individually quick frozen foods (IQF)
- Beverage

- Bakery
- Candy
- Tea
- Disinfectants
- Dried meats
- Pet foods and treats
- Pharmaceuticals
- Nutraceuticals
- Snack foods

The virtual demonstration on the Elete Premier titled, "Learn About Our Hygienic Approach to Packaging Products," is scheduled for 10:15 a.m. Wednesday, November 11.

To see the complete list of product demonstrations and learn how Matrix's vertical form fill seal baggers can help streamline packaging lines to operate more efficiently, visit Matrix's virtual showroom at <https://pe.show/300>. ■



## The METTLER TOLEDO C35 AdvancedLine Checkweigher Provides Fast, Accurate Weighing of Packages in Washdown Conditions

Built for harsh environments, the C35 delivers precise weighing results on a stable weighing platform resistant to high-pressure washdown and most caustic detergents. The system frame is designed according to hygienic principles, with easy access for cleaning and sloped surfaces to discourage liquid collection. The system supports speeds of up to 250 packs per minute and a weighing range from 25 g to 7 kg.

Its precision and dependable accuracy fits the C35 for use in a wide range of production situations that require 100 percent reliable weight control, including food processing. A wide range of optional conveyors and handling features, including guiderails to ensure smooth product handling, provides for the optimal transport of open products such as jars, trays and cans. The system is operated from a 7-in. multi-color, multilingual touchscreen HMI positioned in front of the conveyor for maximum accessibility and operator safety.



The C35 provides positive ROI through increased efficiency, lower production costs, and reliable service. It enables companies to inspect 100 percent of their product, segregate non-conforming packages and collect production data using one of two optional Weight Data Interfaces.

METTLER TOLEDO's communication offering is the most complete in the industry. Solutions available include Ethernet/IP PROFIBUS DP OPC DA/UA, along with TCP/IP, and various serial communications solutions. Fieldbus and OPC solutions have Pack ML (ISA TR88.00.02) as a fundamental part of their base-architecture, making control integration much simpler and faster. C-Series checkweighers provide real-time monitoring of critical control points (CCPs) to support end-to-end compliance with Hazard Analysis and Critical Control Point (HACCP) and Hazard Analysis and Risk-Based Preventive Controls (HARPC) principles.

The C35 is supported through an extensive global service network that fully recognizes cross-border contracts and ensures timely support, availability and rapid delivery of spare parts. This ensures that production runs smoothly, with minimal disruption.

**For more information, visit**  
[www.mt.com](http://www.mt.com). ■